



## Tassanai Jaruwattanaphan, Ph.D.

Lecturer

e-mail: [fagrtnj@ku.ac.th](mailto:fagrtnj@ku.ac.th); [dipteris@gmail.com](mailto:dipteris@gmail.com)

Tel. +66-2579-0308 ext 127 Fax.+66-0579-1951 ext 112



### Educational Background

2013 Ph.D. (Biology), Chiba University, Japan

Thesis Title: Biosystematic Studies on *Pteris excelsa* and *P. cretica*: fern species including multiple cyto-reproductive types

2010 M.S. (Biology), Chiba University, Japan

Thesis Title: Phylogenetic Analysis and Geographical Distribution of the Cyto-reproductive Types in *Pteris excelsa* Gaud.

2006 B.S. (Agricultural Science), 2<sup>nd</sup> honor, Kasetsart University

Special Problem Title: Survey and Taxonomic Study of Pteridophyte at Doi-Pha Hom Pok, Chiang Mai Province, Thailand

### Grants

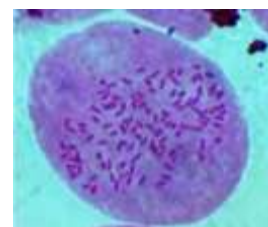
Monbukagakusho scholarship (Government of Japan: MEXT),  
2007 – 2013

### Courses taught

- 01007371 Principles of Plant Propagation
- 01007413 Spices and Medicinal Plants
- 01007425 Indigenous Vegetables and Spices
- 01007438 Plant Materials
- 01007473 Diversity of Horticultural Crop Resources
- 01007575 Molecular Genetics for Horticultural Crops

### Research Interests

- Biology and Evolution of Pteridophyte (ferns & fern allies)
- Ethnobotany
- Plant Cytogenetics
- Plant Molecular Genetics
- Plant Systematics and Evolution



### Publications

Jaruwattanaphan, T., S. Matsumoto, and Y. Watano. 2013. Reconstructing hybrid speciation events in the *Pteris cretica* group (Pteridaceae) in Japan and adjacent regions. *Systematic Botany* 38: 15-27.

### Presentations with Published Abstracts

Jaruwattanaphan, T., S. Matsumoto, and Y. Watano. Reconstructing Hybrid Speciation Events in the *Pteris cretica* Group (Pteridaceae) in Japan and Adjacent Regions, oral presentation at 12<sup>nd</sup> Annual Meeting of the Japanese Society for Plant Systematics, Chiba, Japan 2013.

Jaruwattanaphan, T., N. Nakato, and Y. Watano. Deciphering the origin of hybrids between *Pteris cretica* and its closely related sexual species, poster presentation at 76<sup>th</sup> Annual Meeting of the Botanical Society of Japan, Hyogo, Japan 2012.

Jaruwattanaphan, T., S. Matsumoto, and Y. Watano. Reticulate Evolution in *Pteris cretica* group, oral presentation at the 60<sup>th</sup> Annual Meeting of the Society for the Study of Phytogeography and Taxonomy, Fukui, Japan 2012.

Jaruwattanaphan, T., S. Matsumoto, and Y. Watano. Biosystematic Studies on *Pteris cretica*: The Phylogenetic Relationship of the Species in the *Pteris cretica* group (Pteridaceae - Pteridophyta), poster presentation at the 10<sup>th</sup> Annual Meeting of the Japanese Society for Plant Systematics, East Asian Botany: International Symposium, Tsukuba, Japan 2011.

Jaruwattanaphan, T., K. Takayama, and Y. Watano. Phylogenetic analysis and geographical distribution of the cyto-reproductive types in *Pteris excelsa* Gaud., poster presentation at the 9<sup>th</sup> Annual Meeting of the Japanese Society for Plant Systematics, Aichi, Japan 2010.

